

71

MOTUL
RALLY COSTA BRAVA
GIRONA, 16-18 MAR 2023
MOTUL

 girona ets tu
 girona és esport

 Generalitat
 de Catalunya

esportcat


 Diputació
 de Girona

 Costa Brava
 Pirineu de Girona

 Ajuntament
 de Girona

 Ajuntament de
 Fornells de la Selva


FIA EUROPEAN HISTORIC RALLY CHAMPIONSHIP · CAMPEONATO DE ESPAÑA DE RALLYES PARA VEHÍCULOS HISTÓRICOS · CAMPIONAT DE CATALUNYA DE VEHICLES HISTÒRICS

SERVICE PARK REGULATIONS

1. LOCATION

Carrer Pla de la Seva (Service Park IN) 17458 Fornells de la Selva, Girona: 41°56.591'N 2°48'048E

OPENING OF THE SERVICE PARK

2.1 BEFORE THE EVENT

- The Service Park will **open for the installation of assistances** on **Wednesday** 15th March from 8:00 a.m. to 10:00 p.m. and **Thursday** 16th March from 8:00 a.m. to 8:30 p.m. Check point 2.4 of this document where the Service Park hours are indicated.
- **Only one assistance unit** (car / van / trailer / caravan / motorhome / truck) per registered driver will be authorized within the assistance space granted to a competitor.
- The **assigned area for each participant is 36 m²**. The fee for additional space for the assistance is €3.00/m².
- The payment of the additional service space can be made at the Rally HQ, prior notice of the space needs or in the same service park at the time of reception, if the available capacity allows it, otherwise only the assigned area for each participant of 36 m² must be used.
- The areas reserved for participants in the Service Park are exclusively for sporting use. The use of these areas for public relations, sponsorship meals, reception of guests, hospitality units, etc. is not allowed.
- Each breach of this rule will be charged at the price of €125/m².
- Only vehicles that have the "**Service**" sticker will have authorized entry to the Park.
- In order to park in the Auxiliary Service car park, the teams must request the "Auxiliary Service" pass when formalizing their registration.
- All team vehicles must be parked within their assistance area.
- Vehicles parked outside their area must be removed and parked outside the Service Park.
- Trailers must park in the "Trailers Parking", located in the space provided between the streets Carrer Pla de la Seva and Carrer del Ferrocarril (entrance) - see point 4.1

#RallyMotulCostaBrava www.RallyClassics.org

71

MOTUL
RALLY COSTA BRAVA
GIRONA, 16-18 MAR 2023
MOTUL

 girona ets tu
 girona és esport

 Generalitat
 de Catalunya

esportcat


 Diputació
 de Girona

 Costa Brava
 Pirineu de Girona

 Ajuntament
 de Girona

 Ajuntament de
 Fornells de la Selva

 FIA
 FIA HISTORIC
 EUROPEAN CHAMPIONSHIP


CERVA



MotorDona

 RC
 RALLYCLASSICS

FIA EUROPEAN HISTORIC RALLY CHAMPIONSHIP - CAMPEONATO DE ESPAÑA DE RALLYES PARA VEHÍCULOS HISTÓRICOS - CAMPIONAT DE CATALUNYA DE VEHICLES HISTÒRICS

2.2 DURING THE EVENT

The entry or exit of the Service Park vehicles is authorized at all times, but it is strongly recommended to avoid circulation during assistance hours.

2.3 ACCESS, DRIVING AND PARKING SERVICE VEHICLES IN THE SERVICE PARK

Racing cars have always priority within the Service Park.

BEFORE THE START OF THE RALLY:

- **Wednesday 15/03:** Assistance vehicles will be received from 08:00 to 22:00. After that time, only vehicles with the Service and ORG sticker will be allowed to enter and exit, until **00:00**, when the park will be closed and only exit will be allowed.
- Assistances that arrive after 10:00 p.m. must be placed in the waiting area at the start of the Service, for space allocation on 16/03 from 08:00 a.m. - see point 4.1.
- **Thursday 16/03:** Assistance vehicles will be received from 08:00 to 20:30. After that time, only vehicles with the Service and ORG sticker will be allowed to enter and exit, until 00:00, when the park will be closed and only exit will be allowed.
- **Friday 17/03:** Assistance vehicles will be received from 07:00 to 08:00.
- Service Vehicle Entrance: only through Carrer Pla de la Seva TC SP IN 1- See point 4.
- Service Vehicle Exit: only through Carrer Pla de la Seva TC SP OUT.

DURING THE RALLY

- It is strictly **forbidden** to open the fences or move the New Jersey-type concrete barriers to access the interior of the Service Park.
- Vehicles have to follow the direction of each street, when it is a one-way street.
- Only bikes, scooters and motorbikes are allowed to circulate in the opposite direction and they must pay the utmost attention.

#RallyMotulCostaBrava www.RallyClassics.org

71

MOTUL
RALLY COSTA BRAVA
GIRONA, 16-18 MAR 2023
MOTUL

 girona ets tu
 girona és esport

 Generalitat
 de Catalunya

esportcat


 Diputació
 de Girona

 Costa Brava
 Pirineu de Girona

 Ajuntament
 de Girona

 Ajuntament de
 Forrells de la Seiva

 FIA
 HISTORIC
 RALLY
 EUROPEAN CHAMPIONSHIP


CERVH



MotorDona

 RC
 RALLYCLASSICS

FIA EUROPEAN HISTORIC RALLY CHAMPIONSHIP · CAMPEONATO DE ESPAÑA DE RALLYES PARA VEHÍCULOS HISTÓRICOS · CAMPIONAT DE CATALUNYA DE VEHICLES HISTÒRICS

- Service Vehicles Entrance: only through Carrer Pla de la Seva TC SP IN 1
- Service Vehicles Exit: only through Carrer Pla de Seva, TC SP OUT - See map in point 4, **one direction of circulation.**
- Maximum speed inside the Service Park: **30 km/h**

2.4 TIMETABLES

WEDNESDAY 15/03	
Service Park Timetable	08h00 to 00h00
Reception of assistance vehicles	08h00 to 22h00
After the reception time, participants will be able to leave their equipment in the waiting area (start of the service) in order to be placed in their area on Thursday 16/03 at 08h00.	
THURSDAY 16/03	
Service Park Timetable	08h00 to 00h00
Reception of assistance vehicles	08h00 to 20h30
After 00h00, security staff will let you leave the Service but not enter.	
FRIDAY 17/03	
Service Park Timetable	07h00 to 01h00 of Saturday 18th
Reception of assistance vehicles	07h00 to 08h00
After 00h00, security staff will let you leave the Service but not enter.	
SATURDAY 18/03	
Service Park Timetable	05h30 to 01h00 of Sunday 19th
After 01h00, security staff will let you leave the Service but not enter.	

 #RallyMotulCostaBrava www.RallyClassics.org

MICHELIN

RallyYear

GT2i

 HOTELS
 ULTONIA

 TECNIGAS
 SILencers & EXHAUST SYSTEMS

 PORSCHE
 CENTRO PORSCHE GIRONA

rikicars.com

 BLINK
 GIRONA

G

ibis

ÁGORA

i@

MiRally

 GARATGE
 INTERNACIONAL
 GIRONA

Suprametal

ALCALA

alcala

NOWS

Etomator

 BAR RESTAURANT
 Angel

71

MOTUL
RALLY COSTA BRAVA

GIRONA, 16-18 MAR 2023

MOTUL

girona ets tu
girona és esport

Generalitat de Catalunya

esportcat



Diputació de Girona



Costa Brava Pirineu de Girona

Ajuntament de Girona



Ajuntament de Fornells de la Selva

FIA HISTORIC RALLY EUROPEAN CHAMPIONSHIP



CERVH



MotorDona

RC RALLYCLASSICS

FIA EUROPEAN HISTORIC RALLY CHAMPIONSHIP · CAMPEONATO DE ESPAÑA DE RALLYES PARA VEHÍCULOS HISTÓRICOS · CAMPIONAT DE CATALUNYA DE VEHICLES HISTÒRICS

SUNDAY 19/03	
Service Park Timetable	08h00 to 10h00
At 10 a.m. the street where the Service has been installed will be open and unguarded	

For **special arrival times**, please contact the Service Park Manager.

Jordi Medico - jordi.medico@rallyclassics.org

3. OTHER REGULATIONS

- It is **forbidden to make holes in the ground** (to hold tents). You must use ballasts.
- It is **mandatory the use of a ground protector or mat** (covering the whole service area) in order to avoid stains and contamination.
- It is **mandatory to collect all litter**. Containers will be available on every street.
- It is strictly forbidden to refuel inside the Service Park. There is a Refuelling Zone after the Service Park exit.
- It is forbidden to manipulate public lighting to obtain electricity.
- In the service area, **pets** must remain on a leash at all times to avoid accidents.
- Respect the instructions of the Service Park staff at all times.

#RallyMotulCostaBrava www.RallyClassics.org

MICHELIN

Rallycar

GT2i

HOTELS
ULTONIA

TECNIGAS
SILENCERS & EXHAUST SYSTEMS

PORSCHE
CENTRO PORSCHE GIRONA

rikicars.com

BLINK
CARRERES GIRONA

Gi
Girona

ibis

ÀGORA

i@
integrate apps

MiRally

GARATGE INTERNACIONAL
GIRONA

Suprametal

ALCALA

alcalá

NEWS
ELECTRIC MOTORCYCLES

Etomotor
COMPETITIU'S DELS

BAR RESTAURANT
Angel

71

MOTUL
RALLY COSTA BRAVA

GIRONA, 16-18 MAR 2023

MOTUL

girona ets tu
girona és esport

Generalitat de Catalunya
esportcat

FIA
FIA HISTORIC
EUROPEAN CHAMPIONSHIP

Diputació de Girona

Costa Brava
Pirineu de Girona

Ajuntament de Girona

Ajuntament de Forrells de la Seiva

FIA HISTORIC
EUROPEAN CHAMPIONSHIP

CERVH

CS

MotorDona

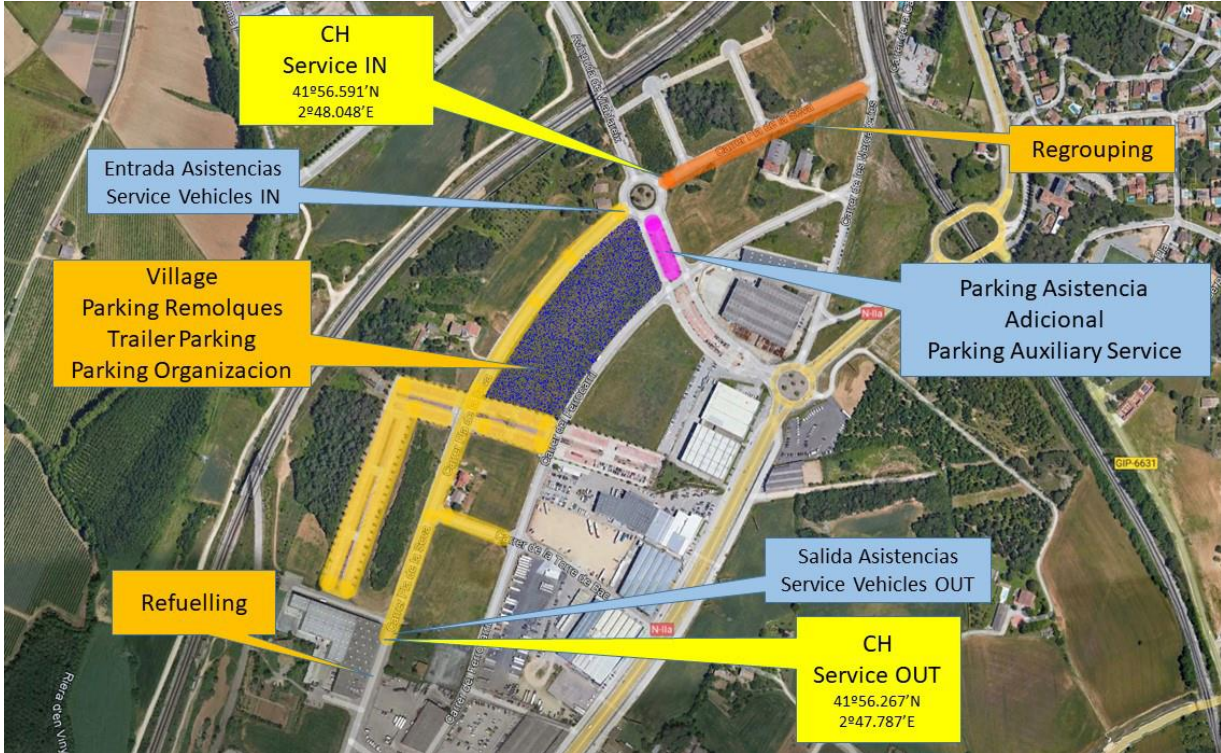
MotorDona

RC
RALLYCLASSICS

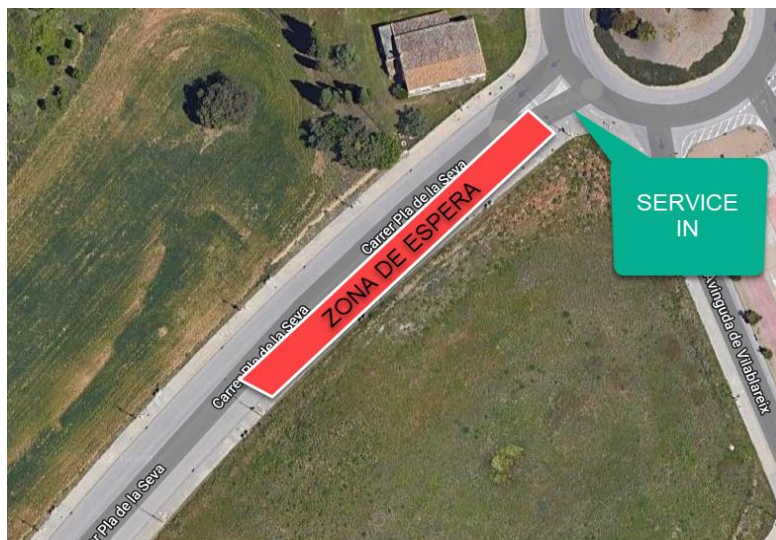
FIA EUROPEAN HISTORIC RALLY CHAMPIONSHIP - CAMPEONATO DE ESPAÑA DE RALLYES PARA VEHÍCULOS HISTÓRICOS - CAMPIONAT DE CATALUNYA DE VEHICLES HISTÒRICS

4. SERVICE PARK MAP

4.1 General map:



4.2 Waiting area:



#RallyMotulCostaBrava

www.RallyClassics.org

MICHELIN

RallyYear

GT2i

HOTELS
ULTONIA

TECNI GAS
SILENCERS & EXHAUST SYSTEMS

PORSCHE
CENTRO PORSCHE GIRONA

rikicars.com

BLINK
PRECISION CARWASH

G

ibis

AGORA

i@

MiRally

GARAGE
INTERNACIONAL
GIRONA

Suprametal

ALCALA

alcalá

NEWS

Photomotor

BAR RESTAURANT
Angel