

SERVICE PARK REGULATIONS

1. LOCATION

Carrer Pla de la Seva (Service Park IN) 17458 Fornells de la Selva, Girona: 41°56.591'N 2°48'048E

OPENING OF THE SERVICE PARK

2.1 BEFORE THE EVENT

- The Service Park will be open for service on Wednesday 16th March from 08h00 to 20h00, Thursday 17th March from 08h00 to 22h00 and Friday 18th March from 07h00 to 9h00. Check point 2.4 of the regulations where the Service timetable is indicated.
- Only one assistance unit (car / van / trailer / caravan / camper van / truck) per registered driver will be authorised within the assistance space allocated to a competitor.
- Only vehicles with the sticker "Service" or "Auxiliary Service Park" will be allowed to enter the Park.
- In order to park next to their own assistance, teams must request the "Auxiliary Service" pass at the time of registration.
- In the case of not having a space next to their own assistance, because it has not been requested once the registrations are closed, it can be requested to the person in charge of the assistance park, paying the amount of the same (100€).
- All team vehicles must be parked within the assistance area.
- Vehicles parked outside the assistance area must be removed and parked outside the Assistance Park or, failing that, if you have an Auxiliary Service pass, in the space provided.
- Trailers must be parked in the "Trailers Parking", located in the space between the streets carrer Pla de la Seva (entrance) and carrer del Ferrocarril (street cut off) - see point 4.3.

2.2 DURING THE EVENT

Access into or exit from the SP for service vehicles is authorized at any time, but it is **strongly recommended** to avoid driving service vehicles within the Service Park during the time of assistances.

2.3 ACCESS, DRIVING AND PARKING SERVICE VEHICLES IN THE SERVICE PARK

Competition cars always have priority inside the Assistance Park.

BEFORE THE START OF THE RALLY:

- Wednesday 16/03 Assistance will be received from 08h00 until 20h00. From that time onwards, only vehicles with the Service, Auxiliary Service and ORG badge will be allowed to enter and leave the car park, until 00h00, when the park will be closed and only those vehicles with the Service, Auxiliary Service and ORG badge will be allowed to leave.
- The assistances arriving later than 20h00 must be placed in the waiting area at the beginning of the Service, for the allocation of space on 17/03 from 08h00 - see point 4.1.
- Thursday 17/03 Attendance will be accepted from 08h00 until 22h00. From that time only vehicles with the Service, Auxiliary Service and ORG badges will be allowed in and out until 00h00, at which time the park will be closed and only those vehicles with the Service, Auxiliary Service and ORG badges will be allowed to leave.
- Assistance vehicles arriving later than 22h00 must be placed in the waiting area at the start of the Service for the allocation of space on 18/03 from 07h00 - see point 4.1.

Entry Service Vehicles: only via Carrer Pla de la Seva TC SP IN 1- See point 4.

Exit Service Vehicles: only via Carrer Pla de la Seva TC SP OUT

#RallyMotulCostaBrava www.RallyClassics.org

DURING THE RALLY

- It is strictly forbidden to open the fences or move the new jersey type concrete barriers to gain access to the Assistance Park.
- Vehicles must follow the direction of each street, when it is a one-way street.
- Only bicycles, scooters and motorbikes are allowed to circulate in the opposite direction and must pay the utmost attention.

Entry Assistance Vehicles: along Pla de la Seva street TC SP IN 1 Exit Assistance Vehicles: only along Pla de la Seva street, next to TC SP OUT See plan in point 4, one way traffic.

Maximum speed inside the Assistance Park: **30 km/h.**

2.4 TIMETABLES

WEDNESDAY 16/03	
Timetable Service Park	08h00 a 00h00
Reception of assistance vehicles	08h00 a 20h00
After the reception time, participants will be able to leave their equipment in the waiting area (start of the service) in order to be placed in their attendance area on Thursday 17/03 at 08h00.	
THURSDAY 17/03	
Timetable Service	08h00 a 00h00
Reception of assistance vehicles	08h00 a 22h00
After the reception time, participants will be able to leave their equipment in the waiting area (start of the service) in order to be placed in their assistance area on Friday 18/03 at 07h00.	
FRIDAY 18/03	
Timetable Service	07h00 a 00h00
After 00h00, security staff will let you leave the Service but not enter.	

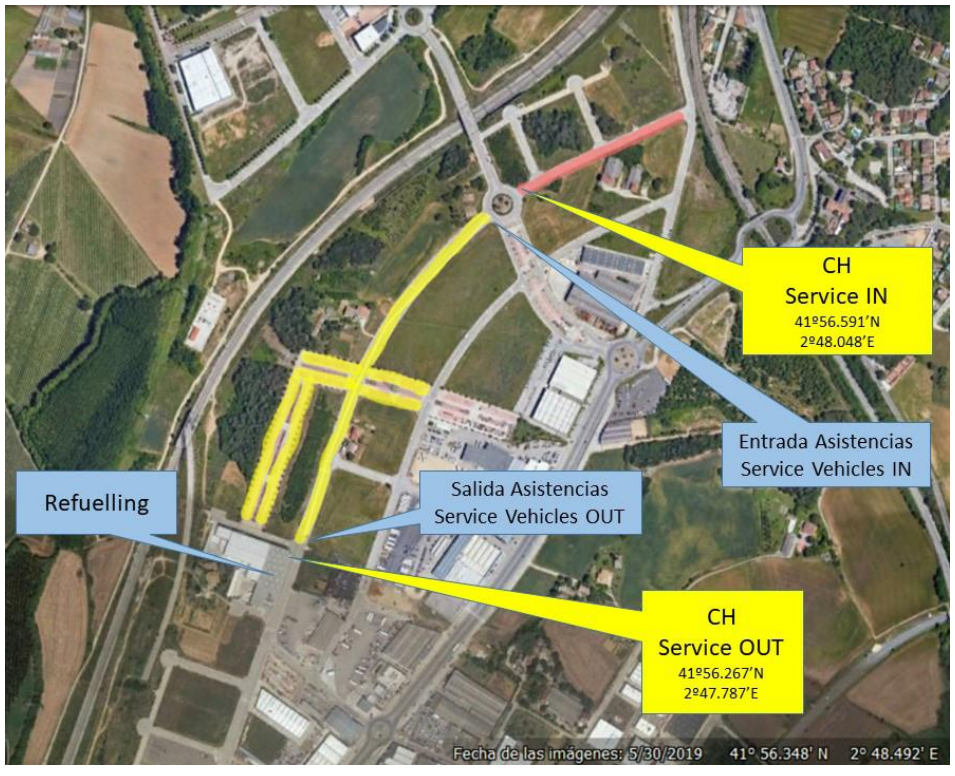
SATURDAY 19/03	
Timetable Service	05h30 a 01h00
After 01h00, the security staff will let you out of the Service but not in.	
SUNDAY 20/03	
Timetable Service	06h00 a 10h00
At 10 a.m. the street where the Service has been installed will be open and unguarded.	

3. OTHER REGULATIONS

- It is **forbidden to make holes in the ground** (to hold tents). You must use ballasts.
- It is **compulsory the use of a ground protector** (covering the whole service area) in order to avoid stains and contamination.
- It is **compulsory to collect all litter**. Containers will be available on every street
- It is strictly forbidden to refuel inside the Service Park. There is a Refuelling Zone after the Service Park exit.

4. ASSISTANCE PARK MAP

4.1 General map

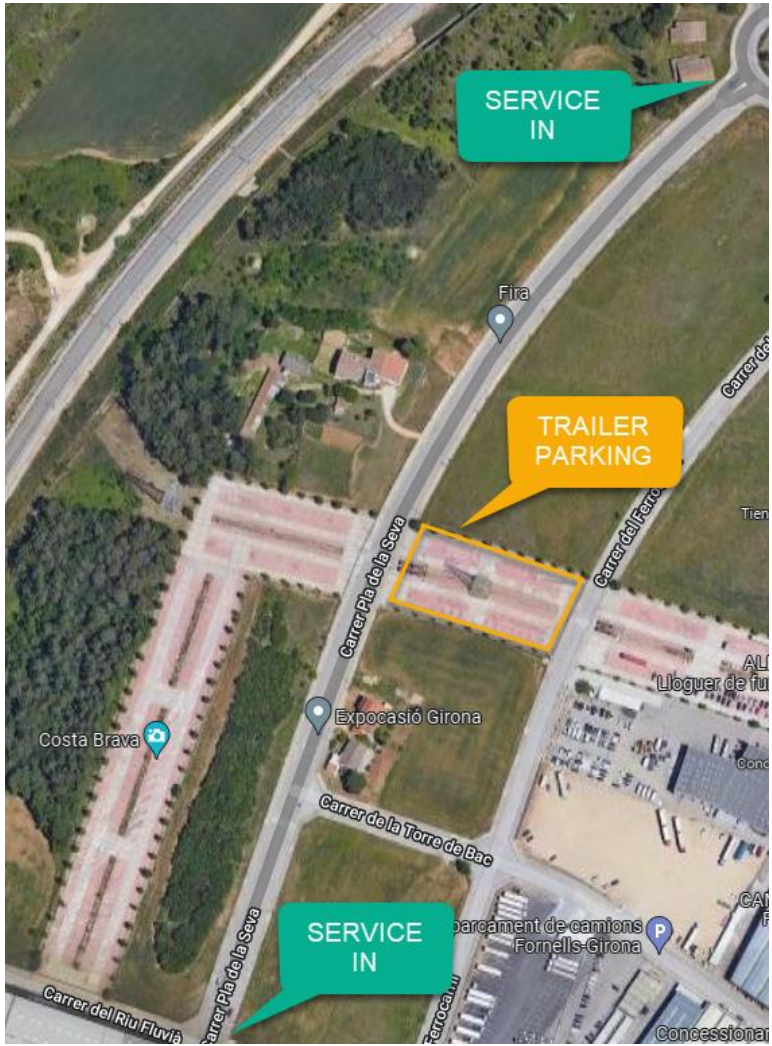


4.2 Waiting area:



#RallyMotulCostaBrava www.RallyClassics.org

4.3 Trailer Parking:



Contact: Jordi Medico - Service Manager
Mail: jordi.medico@rallyclassics.org