



SERVICE PARK REGULATIONS

1. LOCATION

Carrer Pla de la Selva (Service Park IN) 17458 Fornells de la Selva, Girona: 41°56.591'N 2°48'048E

OPENING OF THE SERVICE PARK

2.1 BEFORE THE EVENT

- The Service Park will be open to set the services up from **Wednesday 17th November** at 08:00 until **Sunday 21st November** at 10:00.
- Only 1 service vehicle or unit (car, van, trailer, caravan, motorhome) per registered driver is authorised in the service space allocated to a competitor.
- Only vehicles carrying a “Service” or “Auxiliary Service” plate will be authorized within the premises of the Service Park.
- In order to be able to park next to their own assistance, the teams will have to request the “Auxiliary Service” plate when registering.
- If there is no space next to the assistance itself, because the “Auxiliary Service plate” has not been requested once the registrations have closed, it can be requested by paying the amount of this to the Service Manager.
- All team vehicles must be parked within their service zone.
- Trailers must be parked in the “Trailers Parking”, located at Fornells de la Selva accessible from street *Pla de la Selva* (entrada)

2.2 DURING THE EVENT

Access into or exit from the SP for service vehicles is authorized at any time, but it is **strongly recommended** to avoid driving service vehicles within the Service Park during the time of assistances.

#RallyCostaBrava www.RallyClassics.org



2.3 ACCESS, DRIVING AND PARKING SERVICE VEHICLES IN THE SERVICE PARK

Rally cars have always priority in the Service Park.

• BEFORE THE EVENT STARTS (from Wednesday 17th, 08h00 till Thursday 18th, 21h00)

Service Vehicles Entrance: only by street Pla de la Selva TC SP IN. See point 4.

Service Vehicles Exit: only by street Pla de la Selva TC SP OUT. See point 4.

• DURING THE EVENT (from Friday 19th, 08h00 till Saturday 21st at the end of the rally)

Service Vehicles Entrance: only by street Pla de la Selva TC SP IN.

Service Vehicles Exit: only by street Pla de la Selva TC SP OUT. One-way traffic.

- It is strictly forbidden to open fences or move new jersey-type concrete barriers to access the Service Park.
- Vehicles must follow the direction of every street when the street is only one direction.
- Only bikes, scooters, electric scooters and motorbikes are allowed to be driven in opposite direction and have to take maximum care.
- **Speed inside the service park must not exceed 25 km/h**

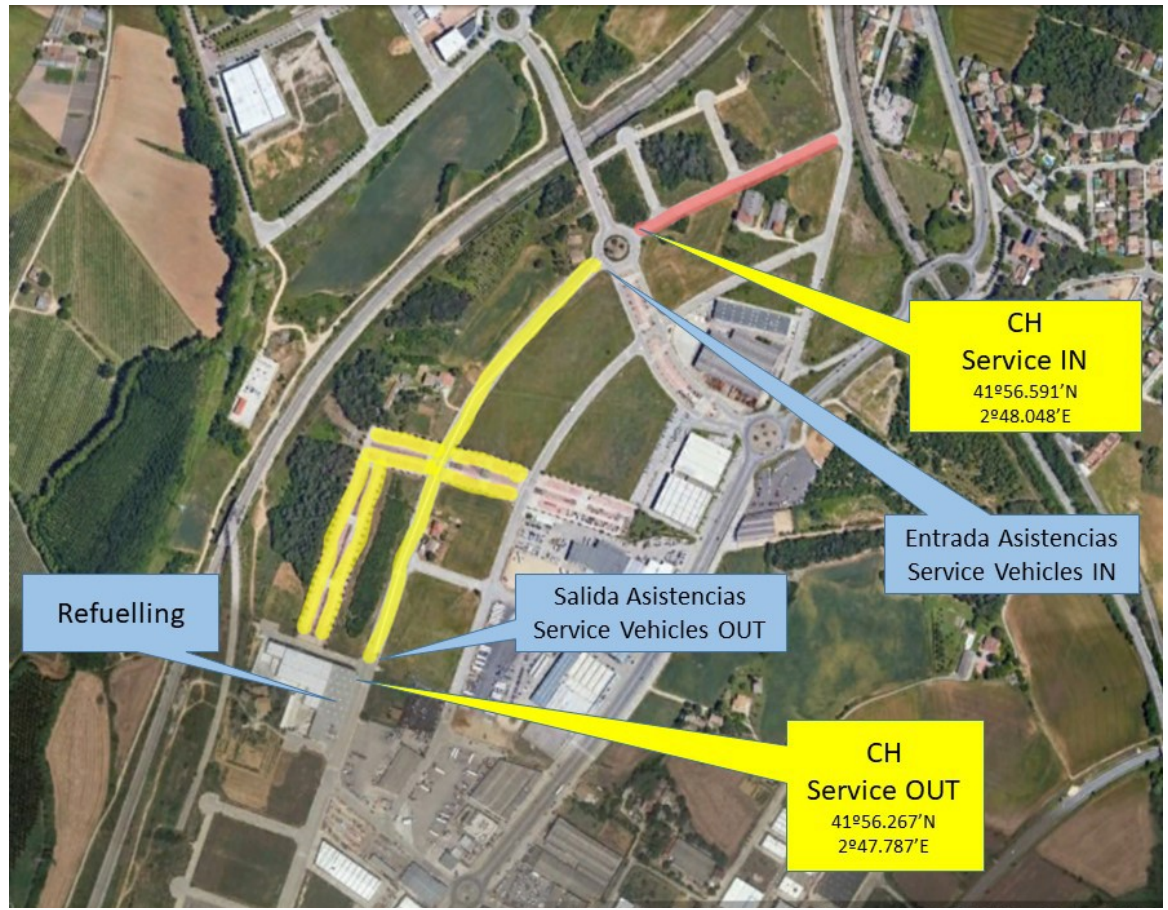
3. OTHER REGULATIONS

- It is **forbidden to make holes in the ground** (to hold tents). You must use ballasts.
- It is **compulsory the use of a ground protector** (covering the whole service area) in order to avoid stains and contamination.
- It is **compulsory to collect all litter**. Containers will be available on every street
- It is strictly forbidden to refuel inside the Service Park. There is a Refuelling Zone after the Service Park exit.

#RallyCostaBrava www.RallyClassics.org



4. SERVICE PARK MAP



Contact: Jordi Medico - Service Manager
Mail: jordi.medico@rallyclassics.org

#RallyCostaBrava www.RallyClassics.org