



## SERVICE PARK REGULATIONS

### 1. LOCATION

Carrer Pla de la Seva (Service Park IN) 17458 Fornells de la Selva, Girona: 41°56.591'N 2°48'048E

### OPENING OF THE SERVICE PARK

#### 2.1 BEFORE THE EVENT

- The Service Park will **open for the installation of assistances** on **Wednesday 12th March** from 8:00 a.m. to 9:00 p.m. and **Thursday 13th March** from 8:00 a.m. to 23:00 p.m. Check point 2.4 of this document where the Service Park hours are indicated.
- **Only one assistance unit** (car / van / trailer / caravan / motorhome / truck) per registered driver will be authorized within the assistance space granted to a competitor.
- The **assigned area for each participant is 36 m<sup>2</sup>**. The fee for additional space for the assistance is €5.00/m<sup>2</sup>.
- The payment of the additional service space can be made at the Rally HQ during the administrative checks, prior notice of the space needs; or in the same service park at the time of reception, if the capacity allows it, otherwise only the assigned area for each participant of 36 m<sup>2</sup> must be used.
- The areas reserved for participants in the Service Park are exclusively for sporting use. The use of these areas for public relations, sponsorship meals, reception of guests, hospitality units, etc. is not allowed.
- Each breach of this rule will be charged at the price of €125/m<sup>2</sup>.
- Only vehicles that have the "**Service**" and "**Auxiliary Service**" sticker will have authorized entry to the Park.
- All team vehicles must be **parked within their assistance area**.
- Vehicles parked outside their area must be removed and parked outside the Service Park.

#RallyKH7CostaBrava [www.RallyClassics.org](http://www.RallyClassics.org)





- Trailers must park in the "Trailers Parking", located in the space provided between the streets Carrer Pla de la Seva and Carrer del Ferrocarril (entrance) - see point 4.1

## 2.2 DURING THE EVENT

The entry or exit of the Service Park vehicles is authorized at all times, but it is strongly recommended to avoid circulation during assistance hours.

## 2.3 ACCESS, DRIVING AND PARKING SERVICE VEHICLES IN THE SERVICE PARK

Racing cars have always priority within the Service Park.

### BEFORE THE START OF THE RALLY:

- Wednesday 12/03:** Assistance vehicles will be received from 08:00 to 21:00. After that time, only vehicles with the "Service", "Auxiliary Service" or "ORG" sticker will be allowed to enter and exit, until **21:00**, when the park will be closed and only exit will be allowed.
- Assistances that arrive after 9:00 p.m. must be placed in the waiting area at the start of the Service, for space allocation on 13/03 from 08:00 a.m. - see point 4.1.
- Thursday 13/03:** Assistance vehicles will be received from 08:00 to 17:00. After that time, only vehicles with the "Service", "Auxiliary Service" or "ORG" sticker will be allowed to enter and exit, **until 23:00**, when the park will be closed and only exit will be allowed.
- Friday 14/03:** No assistance will be received.
- Service Vehicle Entrance: only through Carrer Pla de la Seva TC SP IN 1- See point 4.
- Service Vehicle Exit: only through Carrer Pla de la Seva TC SP OUT.

#RallyKH7CostaBrava [www.RallyClassics.org](http://www.RallyClassics.org)



## DURING THE RALLY

- It is strictly **forbidden** to open the fences or move the New Jersey-type concrete barriers to access the interior of the Service Park.
- Vehicles must follow the direction of each street, when it is a one-way street.
- Only bikes, scooters and motorbikes are allowed to circulate in the opposite direction and they must pay the utmost attention.
- Service Vehicles Entrance: only through Carrer Pla de la Seva TC SP IN 1
- Service Vehicles Exit: only through Carrer Pla de Seva, TC SP OUT - See map in point 4, **one direction of circulation**.
- Maximum speed inside the Service Park: **30 km/h**



## REMINDER

**Please do not leave your personal belongings or valuable items unattended AT ANY TIME.**

## 2.4 TIMETABLES

WEDNESDAY 12/03	
Service Park Timetable	08h00 to 21h00
Reception of assistance vehicles	08h00 to 21h00
After the reception time, participants will be able to leave their equipment in the waiting area (start of the service) in order to be placed in their area on Thursday 13/03 at 08h00.	
THURSDAY 13/03	
Service Park Timetable	08h00 to 23h00
Reception of assistance vehicles	08h00 to 17h00
After the reception time, participants will be able to leave their equipment in the waiting area (start of the service) in order to be placed in their area on Friday 14/03 at 07h00.	
FRIDAY 14/03	
Service Park Timetable	06h25 to 23h45
Reception of assistance vehicles	-
After 24h00, security staff will let you leave the Service but not enter.	
SATURDAY 15/03	
Service Park Timetable	06h50 to 00h00
After 24h00, security staff will let you leave the Service but not enter.	
SUNDAY 16/03	
Service Park Timetable	08h00 to 10h00
After 10h, the Service will remain open and unguarded.	

For **special arrival times**, please contact as soon as possible the Service Park Manager.

Jordi Medico - [jordi.medico@rallyclassics.org](mailto:jordi.medico@rallyclassics.org)

#RallyKH7CostaBrava [www.RallyClassics.org](http://www.RallyClassics.org)





### 3. OTHER REGULATIONS

- It is **forbidden to make holes** in the ground (to hold tents). You must use ballasts.
- It is **mandatory** the use of a **ground protector or mat** (covering the whole service area) in order to avoid stains and contamination.
- It is **mandatory to collect all litter**. Containers will be available on every street.
- It is **strictly forbidden to refuel inside the Service Park**. There is a Refuelling Zone after the Service Park exit.
- It is **forbidden to manipulate public lighting** to obtain power; Fornells de la Selva lighting has an alarm system that detects tampering with direct notification to the police.
- In the service area, **pets must remain on a leash** at all times to avoid accidents.
- Respect the instructions of the Service Park staff at all times.

#RallyKH7CostaBrava

[www.RallyClassics.org](http://www.RallyClassics.org)



**4. SERVICE PARK MAPS**

**4.1 GENERAL MAP:**

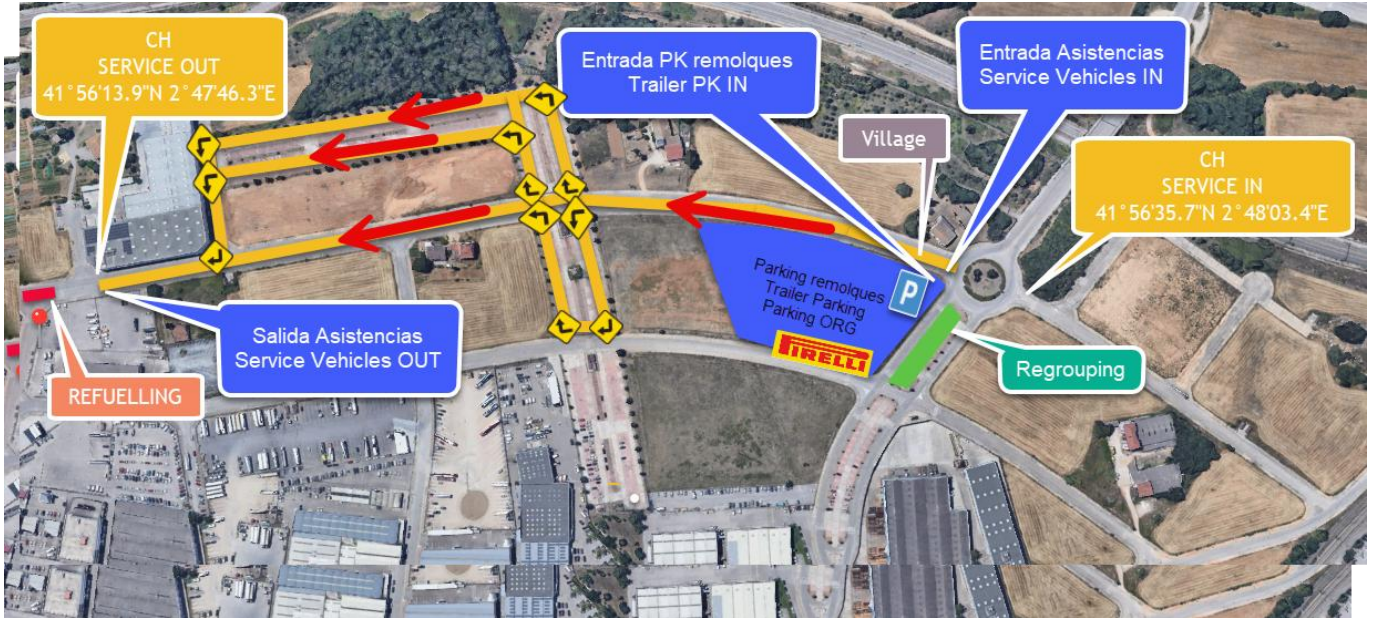


**4.2 WAITING ZONE:**





**4.3 ONE-WAY:**

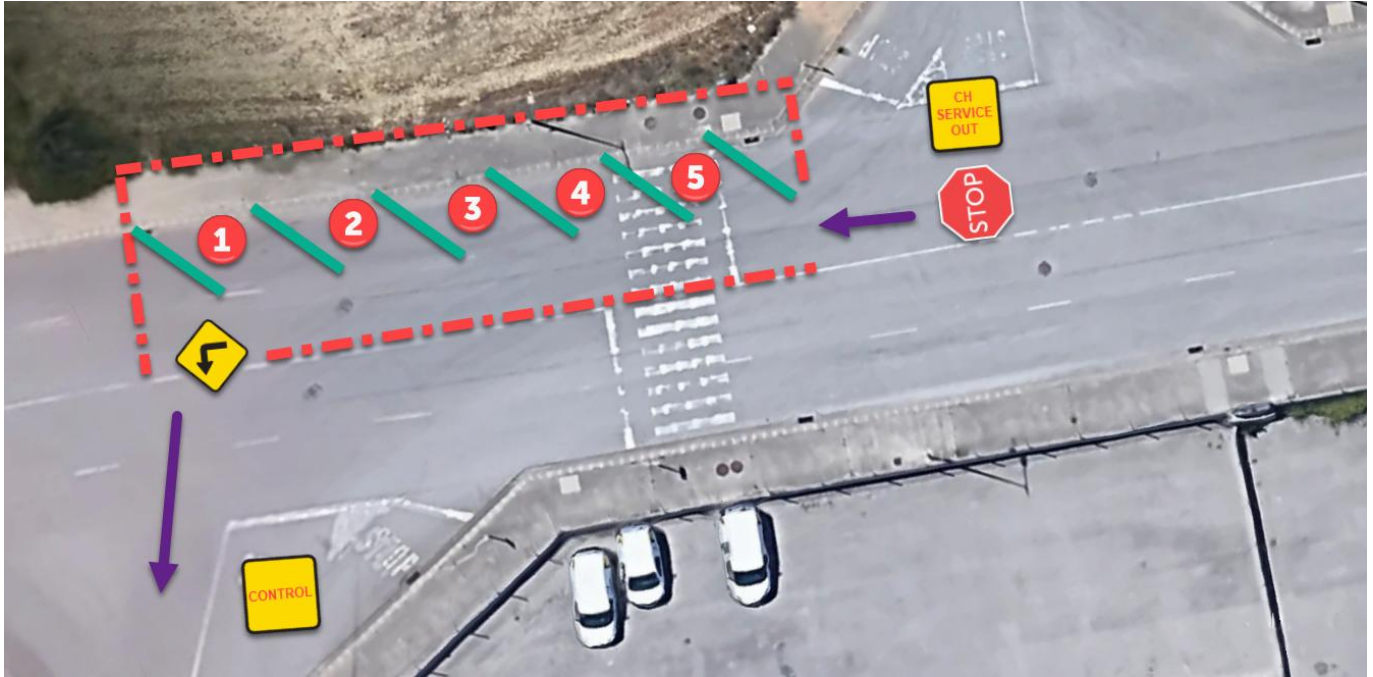


**4.4 VILLAGE AREA:**





4.5 REFUELLING AREA:



**⚠ REMINDER**

**Please do not leave your personal belongings or valuable items unattended AT ANY TIME.**